



## NEWSLETTER April 2011

### *Message from the LPS President:*

The “Infatuation with Saturation – Water Properties and Water Saturation” seminar was a great success. The talks were of an excellent standard and generated some lively debate. Many thanks to the speakers and the committee member who made it happen. The attendance was high and it was good to see the lecture theatre filled with people keen to engage in good old fashioned discussions on the merits of shaly sand models and Pickett plots etc.

We are busy planning the next one day seminar. This will be on the 16<sup>th</sup> June and will address the very important issue of pore pressure prediction and wellbore stability. A programme of nine talks from operators, service companies and consultants is in place. This seminar should have a wide appeal and we expect it to be busy. Book your place early to avoid disappointment, see this newsletter for a poster and registration form.

The next evening meeting will be on April 11<sup>th</sup>, start time 6.30pm. Astrid Koppernaes from Mythri Limited will be speaking about their new methods for log predictions. We hope that the new start time of 6.30pm gives members more time get to the meetings. The evening talks are free and include post-talk food, wine and hopefully some interesting petrophysical discussion.

Hope to see you soon at one of our events.

All the Best

Adam

**Adam Moss: LPS President**



**Dates for Your Diary**

**Monday 11<sup>th</sup> April 2011, LPS Evening Meeting, Geological Society, London Piccadilly. 6.30pm.**

Astrid Koppernaes, Mythri Limited.

"Log prediction using Mythri's new method".

**Monday 9<sup>th</sup> May 2011, LPS Evening Meeting, Geological Society, London Piccadilly. 6.30pm.**

Sam Matthews, Leicester University.

"Petroacoustic Modelling of Shaly Sandstone Reservoirs".

David Hartigan, Leicester University.

"Shale Gas Petrophysics".

**Monday 6<sup>th</sup> June 2011, LPS Evening Meeting, Geological Society, London Piccadilly. 6.30pm.**

Gabriela Carrasquero, Fugro-Jason.

"Rock Physics and Petrophysics Integration as part of a Seismic Reservoir Characterisation workflow. Case Study: Norwegian Barents Sea".

**Thursday 16<sup>th</sup> June 2011, LPS One-Day Seminar, Geological Society, London Piccadilly.**

"Under Pressure" – Pore Pressure & Wellbore Stability.



**LPS Sponsorship:**

Many thanks to these wonderful companies who have agreed to sponsor the LPS for 2011;

- ✓ Baker Hughes,
- ✓ Fugro-Jason,
- ✓ Gaia Earth Sciences Ltd,
- ✓ Kirk Petrophysics,
- ✓ Perenco,
- ✓ RWE-Dea,
- ✓ Schlumberger,
- ✓ Senergy,
- ✓ Weatherford Labs and
- ✓ Weatherford International.

It's not too late, you can still sponsor the LPS for 2011, and remember, as a sponsor, you get your logo on our website, plus an advert on the MarketPlace page and in the Newsletter. Contact Mike Millar for details.

We are also very grateful for the Open-day sponsors;

- ✓ BG Group,
- ✓ Hess,
- ✓ Schlumberger and
- ✓ Tullow Oil.



---

London Petrophysical Society  
One-day Seminar

# “Under Pressure”: Pore Pressure Prediction & Wellbore Stability

Thursday 16<sup>th</sup> June 2011  
At the Geological Society, London

## Objective

A series of presentations to review the current approach and thoughts on  
Pore pressure prediction and wellbore stability

## Presentations to include:

**Keynote & Lusi mud volcano, Indonesia** (*Ikon Science*)  
**Geomechanics for drilling** (*BG Group*)  
**Pore pressure prediction for exploration & appraisal wells** (*BP*)  
**Integration of wellbore stability & pore pressure  
prediction studies into well design** (*Senergy*)  
**Advanced geomechanics workflows for drilling** (*Schlumberger*)  
**Wellbore stability issues** (*Baker Hughes*)  
**Integrated pressure prediction in the central North Sea** (*Maersk*)  
**Pore pressure prediction from seismic** (*Ikon Science*)  
**Pore pressure: What do you do when models do not agree?** (*Tullow*)

Registration Cost: £150 for LPS/PESGB/AFES/SPE Members,  
£175 for Non-members (LPS is not VAT registered)

For further information and registration details please  
visit [www.lps.org.uk](http://www.lps.org.uk) or e-mail:  
[ian.draper@bakerhughes.com](mailto:ian.draper@bakerhughes.com)



Pore Pressure Prediction and Wellbore Stability 16<sup>th</sup> June 2011 Agenda

Time		Presenter	Company	Title
09:00	Registration	Ian Draper	LPS	
09:20	Introduction	Adam Moss/Iain Whyte	LPS	
09:30	Keynote	Richard Swarbrick	Ikon Science	Keynote talk & Lusi mud volcano.
10:00		Anthony Proughten	Senergy	Integration of wellbore stability and pore pressure prediction into well design.
10:30		Miltiadis Parotidis	BG Group	Geomechanics for drilling.
11:00	Coffee			
11:30		Ed Hoskin	Ikon Science	Pore pressure prediction from seismic.
12:00		Gareth Yardley	Maersk Oil	Integrated pressure prediction in the central North Sea.
12:30		Nick Koutsabeloulis	Schlumberger	Advanced geomechanics workflows for drilling.
13:00	Lunch			
14:00		Mark Herkommer	Geoservices	Distinguishing Wellbore Breathing from Formation Influx.
14:30		Chris Ward	Baker Hughes	The pressure transition zone to the Jurassic pressure system in the Central North Sea.
15:00		Jackeline Rodrigues	Baker Hughes	Wellbore stability
15:30	Tea			
16:00		Stephan Petmecky	BP	Pore pressure and fracture gradient prediction for E&A drilling.
16:30		Gordon Holm	Tullow	Pore pressure: What do you do when models do not agree?
17:00				
17:30	Wine & Savouries			

**Job Advertisement:**



**Consultancy Opportunities Qatar**

**Oilfield Production Consultants (OPC) is a globally renowned leader in the provision of professional expertise, management and support to the Upstream Exploration and Production sector of the Oil and Gas industry. We have opportunities both long and short term to join our team of Geoscience professionals based in Doha, Qatar.**

**You should have extensive experience of the Oil and Gas petrophysical operations and studies with a sound knowledge and understanding of open hole, cased hole and production logging tools, NMR and integrated production logging in horizontal wells. Experience in CCAL and SCAL techniques and carbonate reservoirs is of distinct advantage.**

**Long term opportunities to support our Client, a major operator in all aspects of production and development, we offer long term contracts on married or single status.**

**Short term contract opportunity reviewing past and future field development plans.**

**This role will see the incumbent benefitting from excellent living conditions with provisions that include paid holidays, tax free day rates, per diems, full medical/dental insurances and luxury accommodation, travelling on business class flights.**

**For further information on OPC see [www.opc.co.uk](http://www.opc.co.uk) and please contact Dan Kuszpit on 0207 428 1111 or email [dan@opc.co](mailto:dan@opc.co).**

# Discover

Jason®  
PowerLog PRO

Petrophysics that works the way you do!

Whatever the application...

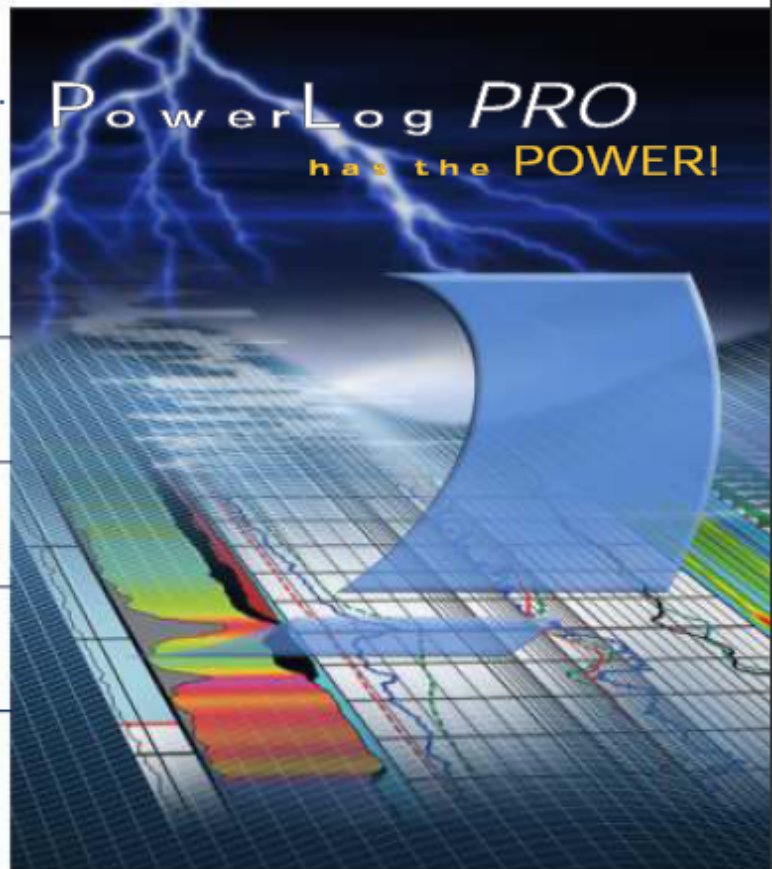
Fast and Efficient  
log conditioning and editing

Laminated Sand-Shale Analysis  
(Baker-Hughes) for laminated  
geologies

Integrated Rock Physics for  
geomechanics, rock mechanics,  
and elastic properties analysis

Stochastic Mineral Analysis  
for carbonate and shale plays

Facies Classification for flow  
unit mapping, shale play sweet  
spot identification, etc.



Visit our website to learn more about PowerLog PRO or to request a 30-day evaluation license



[www.fugro-jason.com/PowerLog](http://www.fugro-jason.com/PowerLog)  
[info@fugro-jason.com](mailto:info@fugro-jason.com)

FUGRO  
JASON  
Voyage of Discovery